

BUILDING AVAILABLE

IDEAL FOR BOTH MANUFACTURING OR DISTRIBUTION

1001 Fisher Rd, Longview TX

SALE: \$9,750,000

LEASE: \$4.80 PSF/YR/NNN

LANDBRIDGE
COMMERCIAL PROPERTIES

Brokerage | Leasing | Management | Development

BRIAN BURKS, SIOR, CCIM
PRINCIPAL BROKER
CELL: 903-352-3000

BRIAN@LANDBRIDGECOMMERCIAL.COM
WWW.LANDBRIDGECOMMERCIAL.COM

SPECIFICATIONS

SIZE:

Approximately 188,278 SF

* Manufacturing/Warehouse: 171,278 SF

* Office Space: 17,000 SF

CONSTRUCTION:

Floors: 6" and 8" reinforced concrete

Walls: Precast concrete tilt wall panels

Columns: Steel H Beam

Roof: Built up metal deck / TPO surface

LAND:

Approximately 38.95 Acres

LIGHTING:

LED lighting throughout warehouse

CEILING HEIGHTS:

32' Clear throughout, except western wall boundary is 30' to joist

ZONING:

Light Industrial

LANDBRIDGE
COMMERCIAL PROPERTIES

Brokerage | Leasing | Management | Development

BRIAN BURKS, SIOR, CCIM
PRINCIPAL BROKER
CELL: 903-352-3000

BRIAN@LANDBRIDGECOMMERCIAL.COM
WWW.LANDBRIDGECOMMERCIAL.COM

SPECIFICATIONS

POWER:

277/240 V 4 Phase Wire
12,000 AMPS
15MW Available Per AEP/SWEPCO

SPRINKLER:

Wet Sprinkler System
* 250,000 Gal Tank

TRUCK LOADING:

North Side: 6 - 8'X10' Dock High Doors
West Side: 1 - 20'X16' Oversized Ramp Level Door
South Side: 2 Docks
* 1 Covered Dock
* 1 Ramp Level Entrance
* 1 Grade Level Door

RESTROOMS:

Men's and Women's separate restrooms located throughout the office and warehouse

PARKING:

Paved and lighted parking for approximately 125 cars

RAIL:

Facility was originally served by two (2) Union Pacific rail spurs; potential for rail service could be reinstalled; one (1) interior spur serves the southwest corner of building

BRIAN BURKS, SIOR, CCIM
PRINCIPAL BROKER
CELL: 903-352-3000

BRIAN@LANDBRIDGECOMMERCIAL.COM
WWW.LANDBRIDGECOMMERCIAL.COM

1001 FISHER RD, LONGVIEW TX

SALE: \$9,750,000

LEASE: \$4.80 PSF/YR/NNN

LANDBRIDGE
COMMERCIAL PROPERTIES

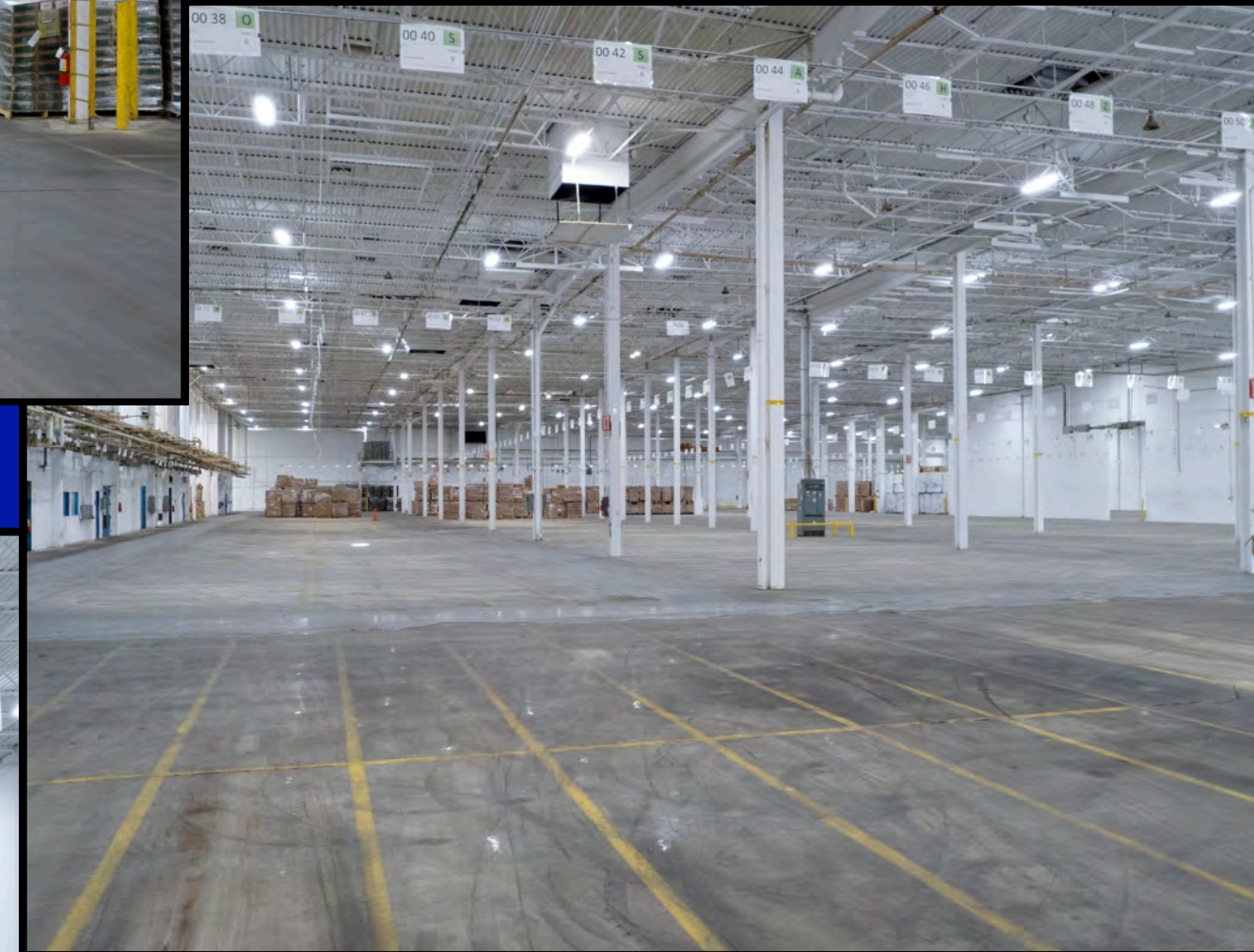
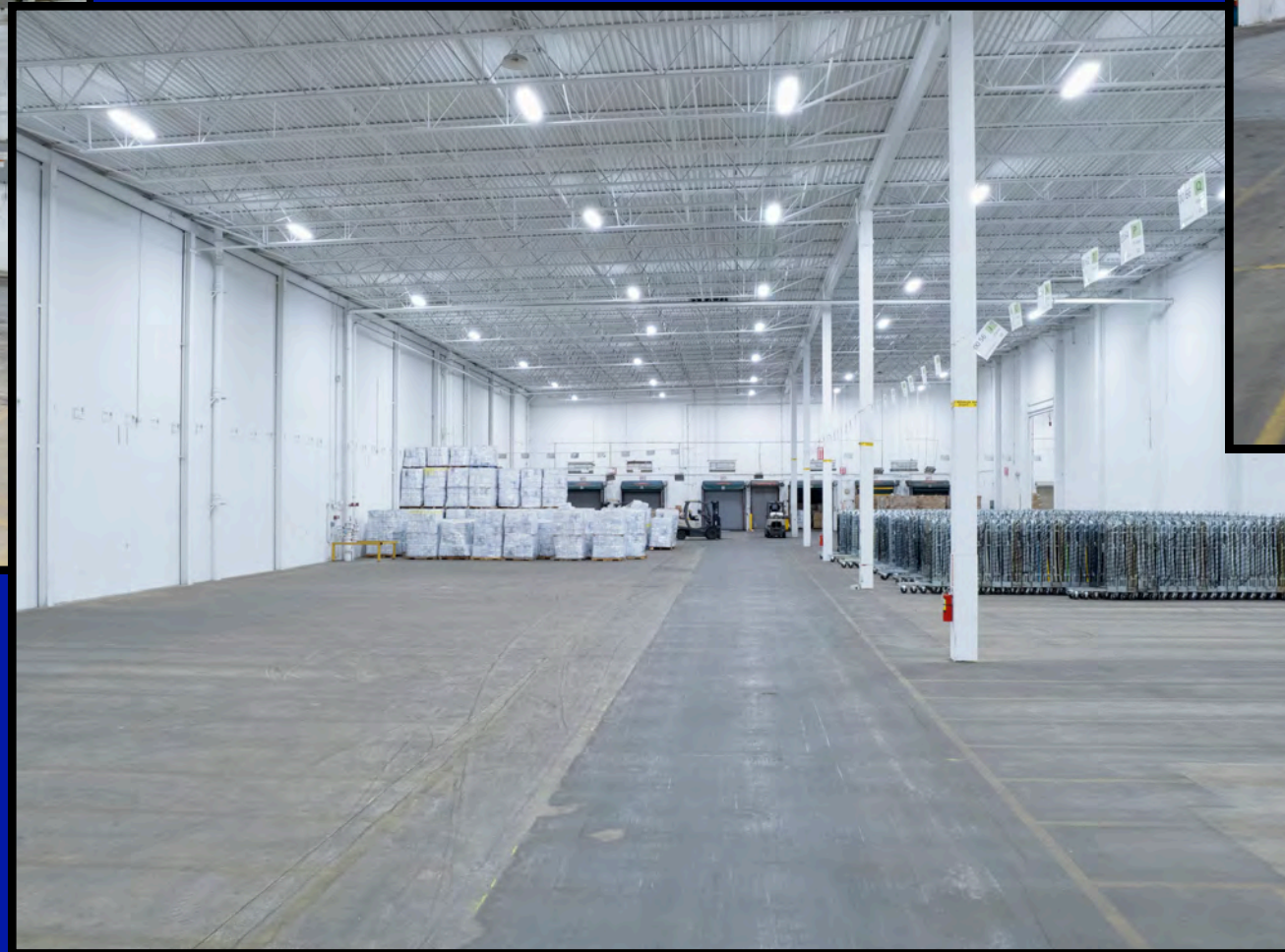
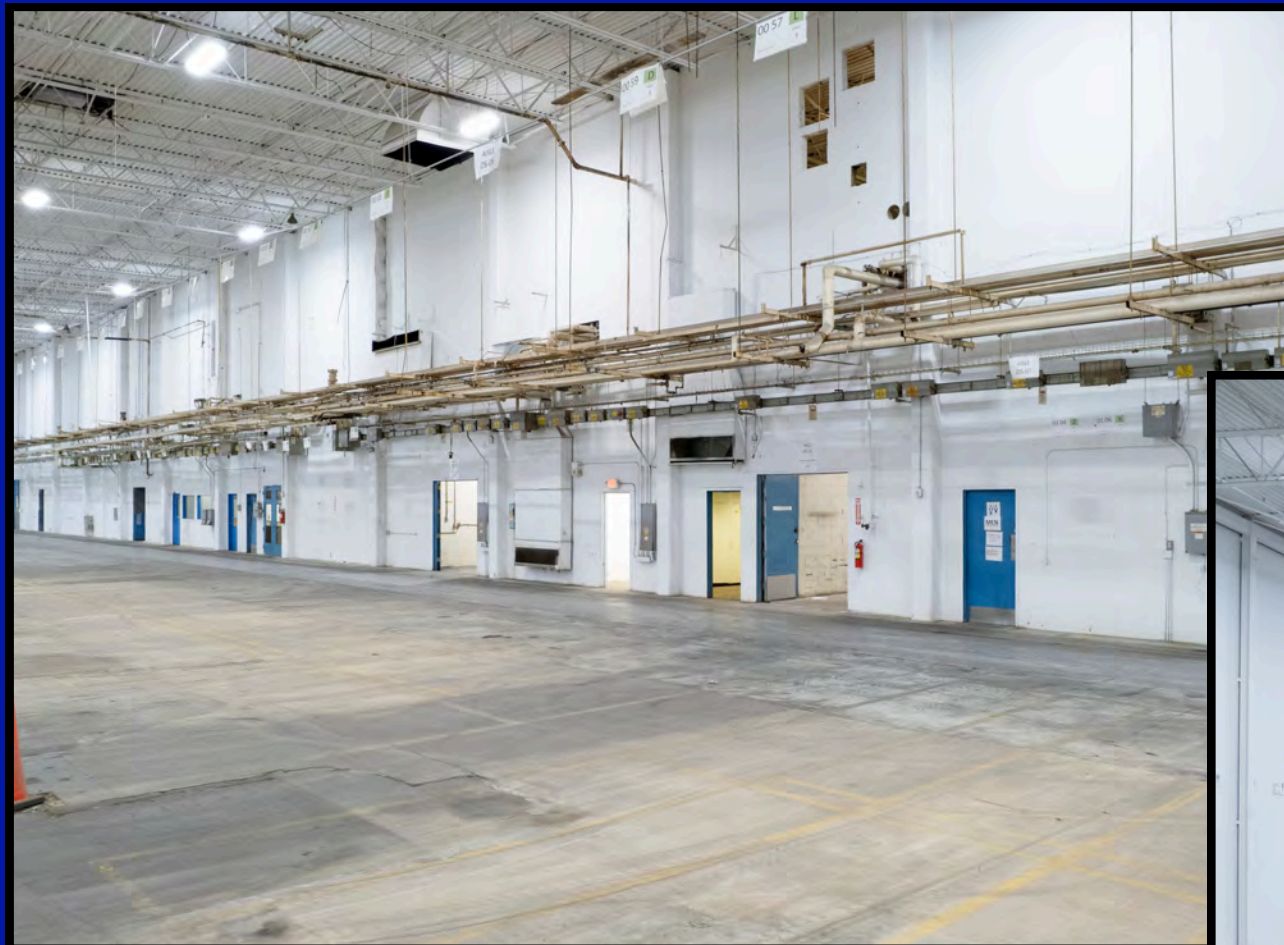
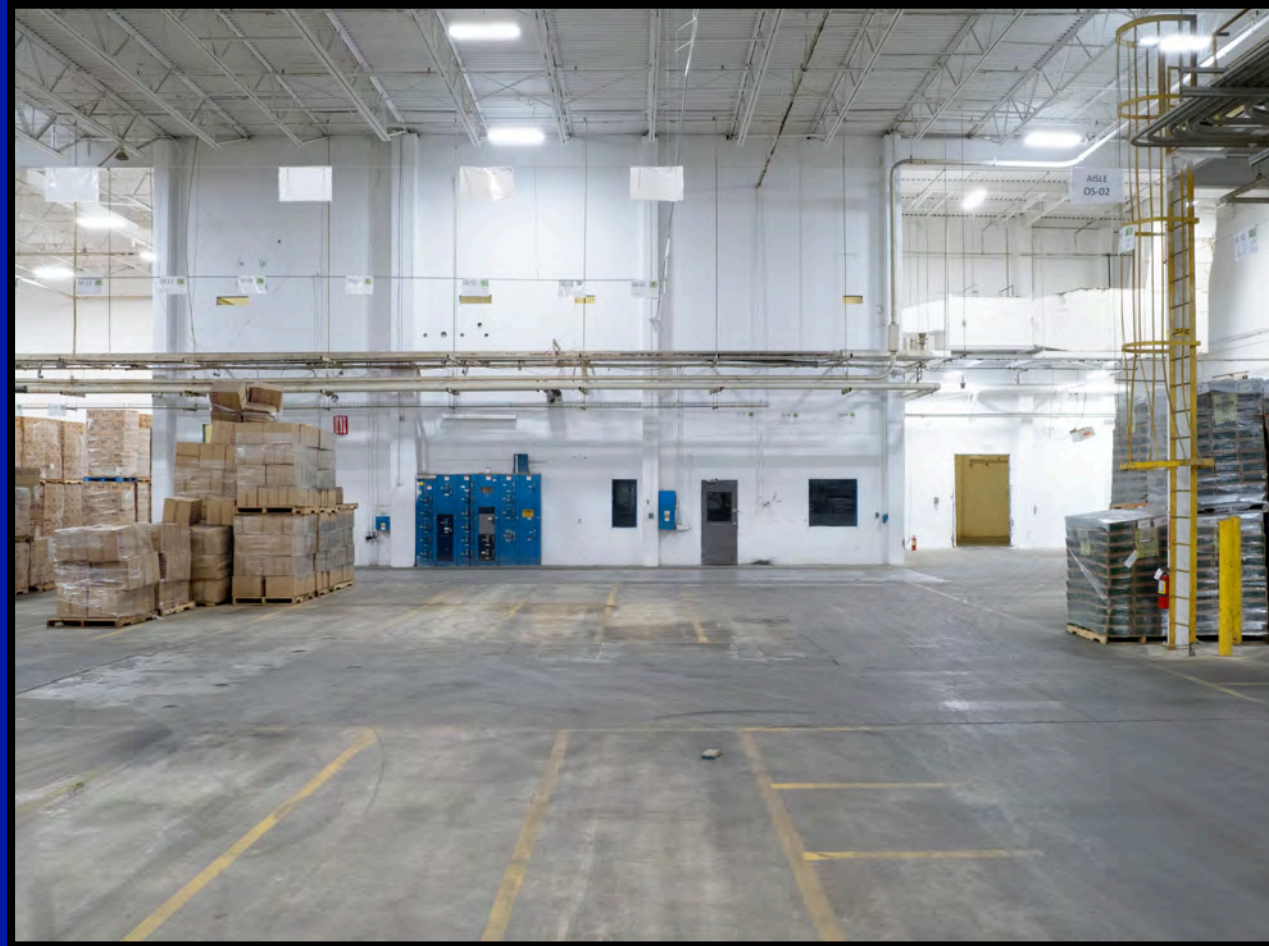
Brokerage | Leasing | Management | Development

BRIAN BURKS, SIOR, CCIM
PRINCIPAL BROKER
CELL: 903-352-3000

BRIAN@LANDBRIDGECOMMERCIAL.COM
WWW.LANDBRIDGECOMMERCIAL.COM

Interior Pictures

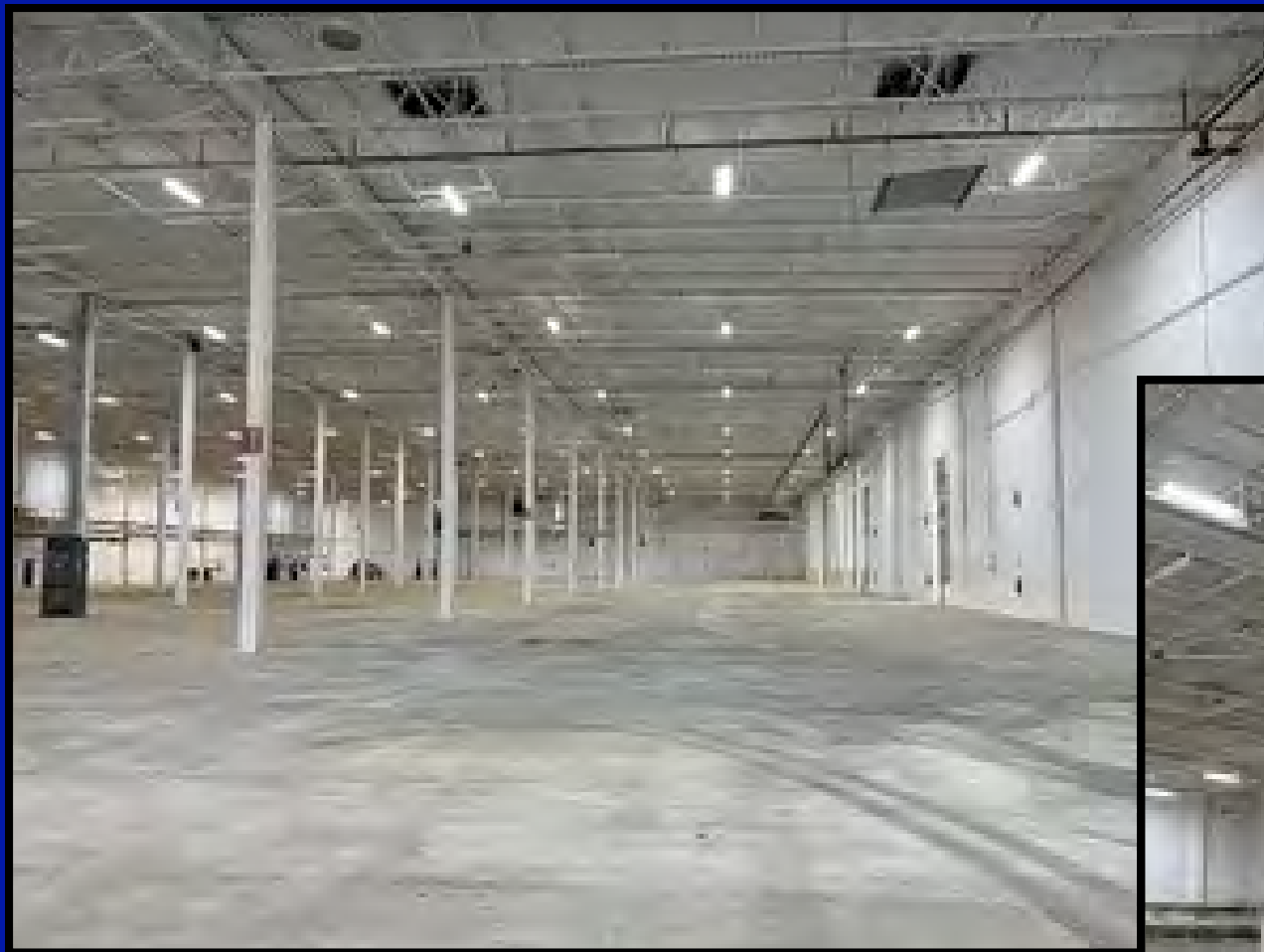
1001 FISHER RD, LONGVIEW TX



BRIAN BURKS, SIOR, CCIM
PRINCIPAL BROKER
CELL: 903-352-3000
BRIAN@LANDBRIDGECOMMERCIAL.COM
WWW.LANDBRIDGECOMMERCIAL.COM

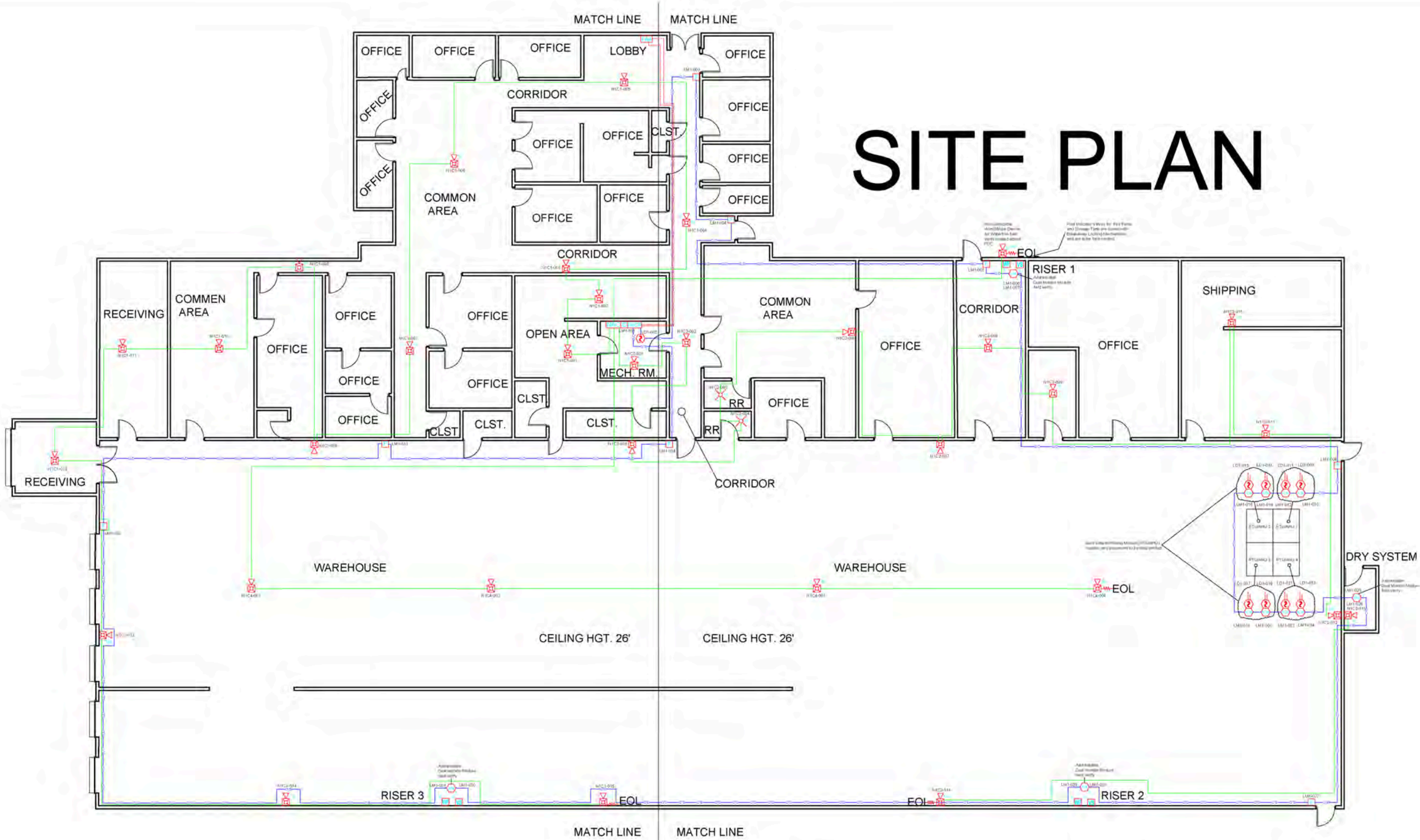
Interior Pictures

1001 FISHER RD, LONGVIEW TX



SITE PLAN:
1001 FISHER RD, LONGVIEW TX

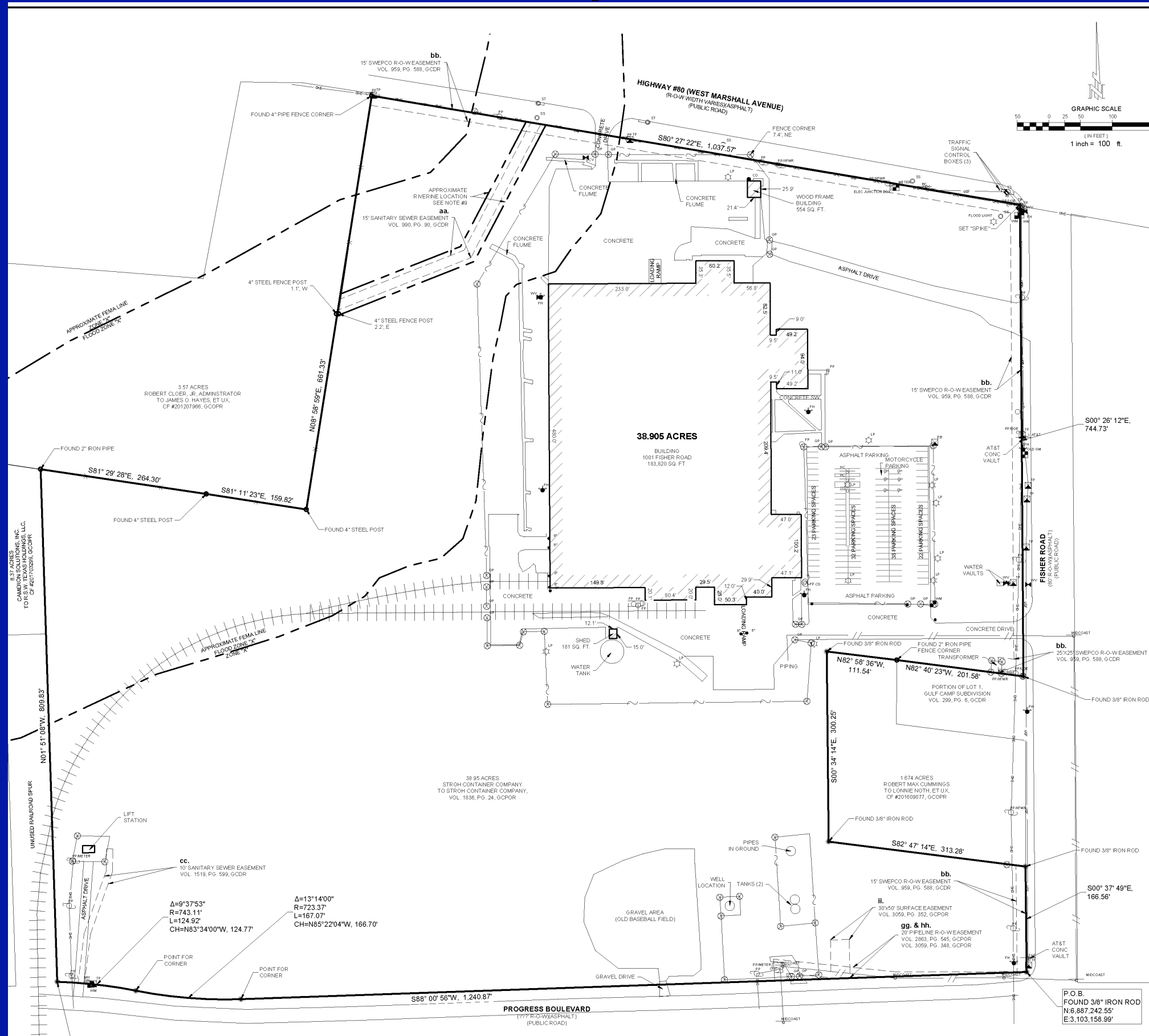
SITE PLAN



SCOPE:
THIS PROJECT IS A NEW FIRE ALARM ADDITION TO AN EXISTING FACILITY AT
1001 FISHER RD, LONGVIEW, TEXAS. A NOTIFIER 50X FIRE ALARM SYSTEM.

SURVEY

1001 FISHER RD, LONGVIEW TX



Aerial

1001 FISHER RD, LONGVIEW TX

2024 Property Taxes \$33,618.40

LANDBRIDGE
COMMERCIAL PROPERTIES

Brokerage | Leasing | Management | Development

BRIAN BURKS, SIOR, CCIM
PRINCIPAL BROKER
CELL: 903-352-3000

BRIAN@LANDBRIDGECOMMERCIAL.COM
WWW.LANDBRIDGECOMMERCIAL.COM



11/2/2015

Information About Brokerage Services

Texas law requires all real estate licensees to give the following information about brokerage services to prospective buyers, tenants, sellers and landlords.

TYPES OF REAL ESTATE LICENSE HOLDERS:

- **A BROKER** is responsible for all brokerage activities, including acts performed by sales agents sponsored by the broker.
- **A SALES AGENT** must be sponsored by a broker and works with clients on behalf of the broker.

A BROKER'S MINIMUM DUTIES REQUIRED BY LAW (A client is the person or party that the broker represents):

- Put the interests of the client above all others, including the broker's own interests;
- Inform the client of any material information about the property or transaction received by the broker;
- Answer the client's questions and present any offer to or counter-offer from the client; and
- Treat all parties to a real estate transaction honestly and fairly.

A LICENSE HOLDER CAN REPRESENT A PARTY IN A REAL ESTATE TRANSACTION:

AS AGENT FOR OWNER (SELLER/LANDLORD): The broker becomes the property owner's agent through an agreement with the owner, usually in a written listing to sell or property management agreement. An owner's agent must perform the broker's minimum duties above and must inform the owner of any material information about the property or transaction known by the agent, including information disclosed to the agent or subagent by the buyer or buyer's agent.

AS AGENT FOR BUYER/TENANT: The broker becomes the buyer/tenant's agent by agreeing to represent the buyer, usually through a written representation agreement. A buyer's agent must perform the broker's minimum duties above and must inform the buyer of any material information about the property or transaction known by the agent, including information disclosed to the agent by the seller or seller's agent.

AS AGENT FOR BOTH - INTERMEDIARY: To act as an intermediary between the parties the broker must first obtain the written agreement of each party to the transaction. The written agreement must state who will pay the broker and, in conspicuous bold or underlined print, set forth the broker's obligations as an intermediary. A broker who acts as an intermediary:

- Must treat all parties to the transaction impartially and fairly;
- May, with the parties' written consent, appoint a different license holder associated with the broker to each party (owner and buyer) to communicate with, provide opinions and advice to, and carry out the instructions of each party to the transaction.
- Must not, unless specifically authorized in writing to do so by the party, disclose:
 - that the owner will accept a price less than the written asking price;
 - that the buyer/tenant will pay a price greater than the price submitted in a written offer; and
 - any confidential information or any other information that a party specifically instructs the broker in writing not to disclose, unless required to do so by law.

AS SUBAGENT: A license holder acts as a subagent when aiding a buyer in a transaction without an agreement to represent the buyer. A subagent can assist the buyer but does not represent the buyer and must place the interests of the owner first.

TO AVOID DISPUTES, ALL AGREEMENTS BETWEEN YOU AND A BROKER SHOULD BE IN WRITING AND CLEARLY ESTABLISH:

- The broker's duties and responsibilities to you, and your obligations under the representation agreement.
- Who will pay the broker for services provided to you, when payment will be made and how the payment will be calculated.

LICENSE HOLDER CONTACT INFORMATION: This notice is being provided for information purposes. It does not create an obligation for you to use the broker's services. Please acknowledge receipt of this notice below and retain a copy for your records.

<u>Landbridge Commercial Properties</u>	<u>591713</u>	<u>info@landbridgecommercial.com</u>	<u>(903)561-9527</u>
Licensed Broker /Broker Firm Name or	License No.	Email	Phone
Primary Assumed Business Name			
<u>Brian W. Burks</u>	<u>400070</u>	<u>brian@landbridgecommercial.com</u>	<u>(903)352-3000</u>
Designated Broker of Firm	License No.	Email	Phone
Licensed Supervisor of Sales Agent/	License No.	Email	Phone
Associate			
<u>Brian W. Burks</u>	<u>400070</u>	<u>brian@landbridgecommercial.com</u>	<u>(903)352-3000</u>
Sales Agent/Associate's Name	License No.	Email	Phone

Buyer/Tenant/Seller/Landlord Initials

Date

Regulated by the Texas Real Estate Commission

Information available at www.trec.texas.gov

TXR-2501

IABS 1-0 Date

Landbridge Commercial Properties, 4614 DC Drive, Suite 2A Tyler TX 75701

Phone: 9033523000

Fax: 9035618325

2002 Title Factory

Brian Burks

Produced with Lone Wolf Transactions (zipForm Edition) 231 Shearson Cr. Cambridge, Ontario, Canada N1T 1J5 www.lwolf.com

The information contained herein was obtained from sources believed to be reliable; however, Landbridge Commercial Properties makes no guarantees, warranties or representations as to completeness or accuracy thereof. The presentations of this property for sale, rent, or exchange is subject to errors, omissions, change of price or conditions of prior sale or lease, or withdrawal without notice.