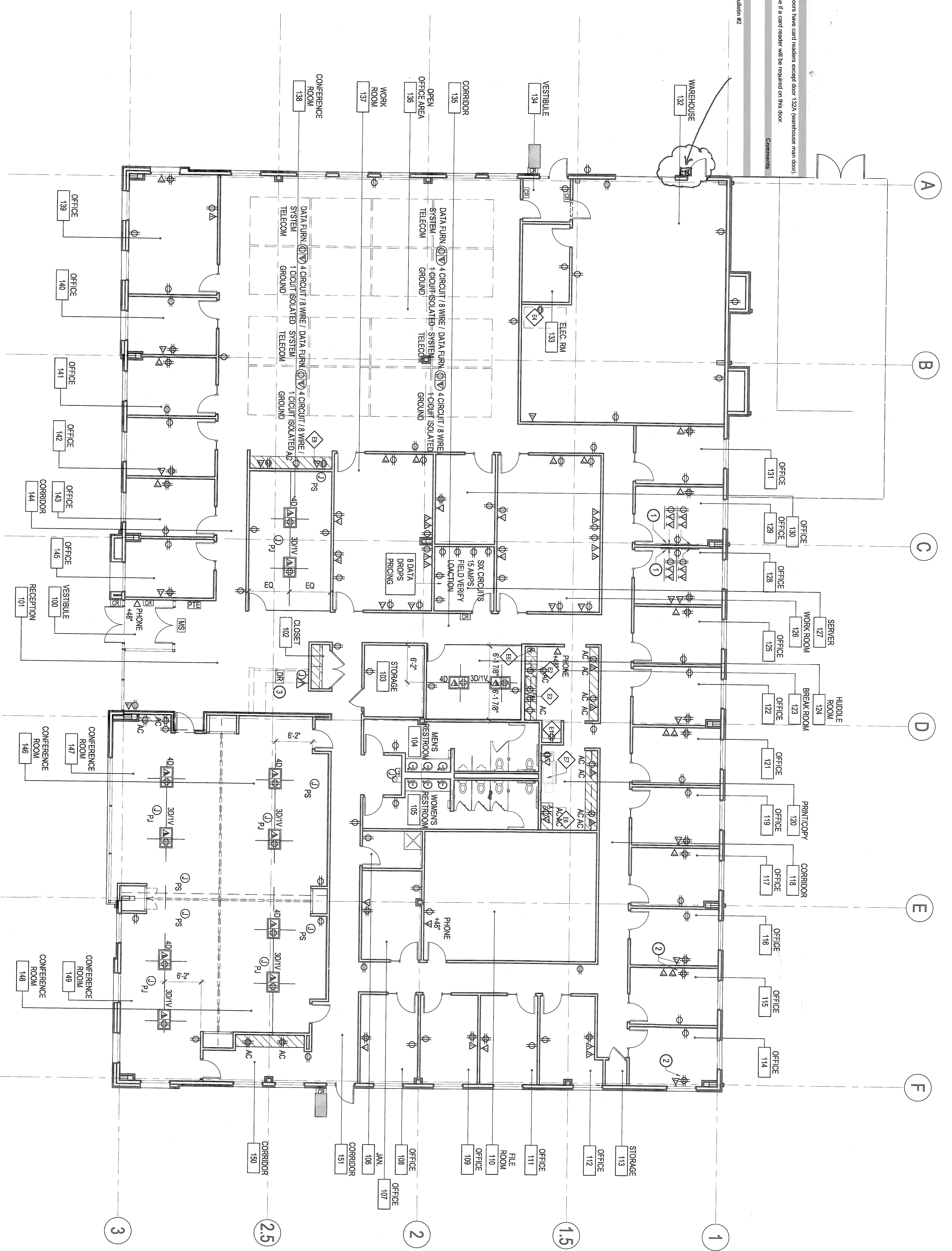


Question #1
 All exterior doors have card readers except door 132A (warehouse main door).
 Please advise if a card reader will be required on this door.

Answer
 Reference Bulletin #2



KEY NOTES

- ① FLAT PANEL MONITOR SCREENS, (2) PER ROOM
- ② LOCATION OF OUTLETS TO BE DETERMINED IN TYPICAL OFFICES; DESK SIDE, OPPOSITE DOOR
- ③ DOOR RELEASE BUTTON, 2 REQUIRED, COORDINATE SECOND DOOR RELEASE BUTTON WITH ARCHITECT

SHEET NOTES

- 1. REFERENCE ELEVATIONS FOR GENERAL LOCATION OF OUTLETS AND OUTLETS WITH SPECIFIC DIMENSIONAL REQUIREMENTS. REFERENCE SHEET A03.01 FOR TYPICAL MOUNTAIN HEIGHTS U.I.O.
- 2. COORDINATE WITH AV DRAWINGS FOR SPECIFIC REQUIREMENTS AND OR LOCATIONS.
- 3. COORDINATE WITH IT DRAWINGS FOR SPECIFIC REQUIREMENTS AND OR LOCATIONS.
- 4. COORDINATE WITH SECURITY/ADT DRAWINGS FOR SPECIFIC REQUIREMENTS AND OR LOCATIONS.
- 4. COORDINATE WITH FURNITURE VENDOR FOR SPECIFIC REQUIREMENTS AND OR LOCATIONS.

**DCP
 MIDDLESTREAM**
 CARTHAGE, TEXAS
 South Shelby St. (US 59)

gensler
 1625 Broadway
 Suite 400
 Denver, CO 80202
 Telephone: 303.733.8388
 Facsimile: 303.523.6823

Issue	Date & Issue Description	By	Check
1	08/23/10 ISSUE FOR CONSTRUCTION	WF	WF

 Signature

 Date

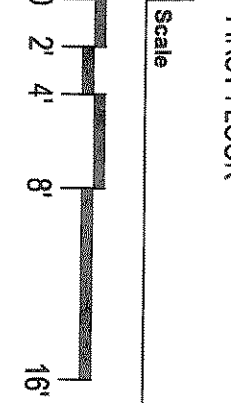
 Title

Project Name
 CARTHAGE FIELD OFFICE

Project Number
 03 7705 003

Client File Name
 A03.01

Description
 POWER & COMM. PLAN
 FIRST FLOOR



A03.01